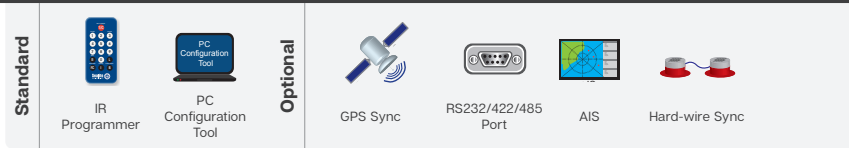


# 6–12NM Solar Marine Lantern

SL-C600



The SL-C600, one of the world's largest self-contained LED lanterns, is a 6–12NM Solar LED Marine Lantern designed for a range of low-maintenance applications.

The light boasts a large internal battery compartment, a SL-155 light-head and 4 premium-grade 20 watt solar modules mounted to collect sunlight at all angles.

The SL-C600 is moulded from UV-stabilised, virgin polyethylene, providing enormous impact and weather resistance, in addition to high visibility IALA colours.

The user-friendly, 2-piece design allows the lantern to be opened for convenient battery inspection or replacement whilst the base remains fixed to the supporting structure.

## Advanced PC or IR Programming

Sealite's convenient PC Configuration Tool or IR programmer allows a host of features to be user set including;

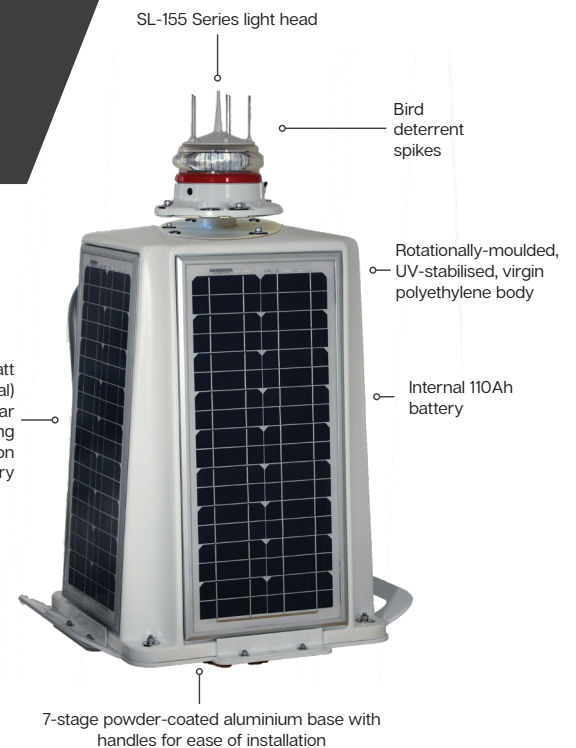
- Multiple intensity settings
- 310 flash settings including custom character
- Automatic effective intensity adjustment
- Adjustable on/off lux levels
- Low battery threshold
- GPS synchronisation offset
- Alarm conditions

## Optional GPS Synchronisation

The SL-C600 may be fitted with an optional GPS module for flash synchronisation to be configured to send out alarm SMS text messages to designated cellular telephone numbers. Users can also have alarms and reports sent to designated email addresses.

## Optional Type 1 or Type 3 AIS

The SL-C600 lanterns are available with a class-leading integrated, low-powered Type 1 or Type 3 AIS. When fitted, the AIS is encapsulated within the body of the SL-155 to maintain the weatherproof integrity.



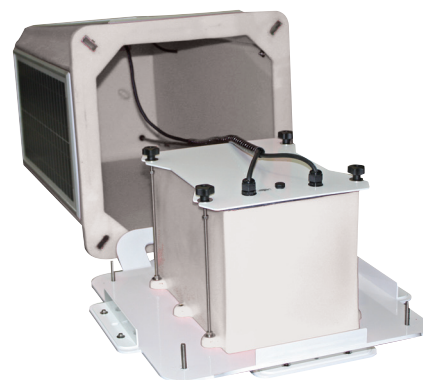
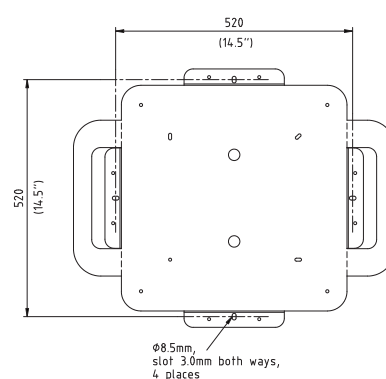
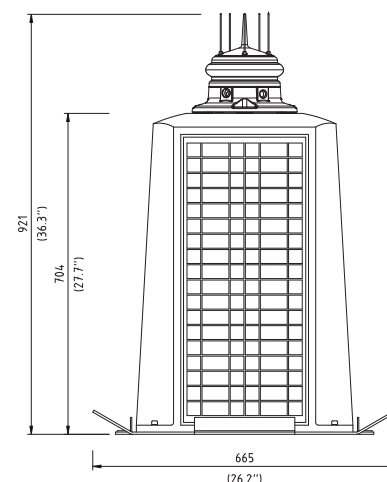
## The Sealite Advantage

- Up to 12NM visible range
- Multiple lens divergences for fixed or floating applications
- Complete unit – ready for immediate installation
- Impact & weather resistant polyethylene
- Handles on the base for ease of installation
- PC or IR Programmer for setup, diagnostic & testing

## Technical Specifications \*

SL-C600	
Light Characteristics	
Light Source	SL-155-2.5D/5D/10D lantern
Available Colours	Red, Green, White, Yellow
Typical Maximum Intensity (cd)†	Refer to Typical Maximum Intensity Table for SL-155 Series Lanterns
Visible Range (NM)	AT @ 0.74: 6–12 AT @ 0.85: 7.8–17.4
Horizontal Output (degrees)	0° - 360°
Vertical Divergence (degrees)	2.5°, 5° or 10°
Available Flash Characteristics	Up to 310 including 256 IALA recommended, & 1 custom
Intensity Adjustments	User adjustable
LED Life Expectancy (hours)	>100,000
Electrical Characteristics	
Current Draw (mA)	Refer to Sealite Power Calculator
Power (W)	Refer to Sealite Power Calculator
Circuit Protection	Polarity protected
Nominal Voltage (VDC)	12
Autonomy (days)	>20 (14 hour darkness, 12.5% duty cycle)
Temperature Range	-40 to 80°C
Solar Characteristics	
Solar Module Type	Monocrystalline
Output (watts)	80 (4 x 20watt)
Charging Regulation	Microprocessor controlled
Power Supply	
Battery Type	Gel SLA
Battery Capacity (Ah)	110
Nominal Voltage (V)	12
Physical Characteristics	
Body Material	Rotationally-moulded UV-stabilised virgin polyethylene
Lens Material	UV-stabilised acrylic
Lens Diameter (mm/inches)	From 171 / 6 <sup>3/4</sup>
Lens Design	Multiple LED optic
Mounting	4 x 11mm mounting holes
Height (mm/inches)	From 813/ 32
Width (mm/inches)	665 / 26 <sup>1/4</sup>
Mass (kg/lbs)	From 50 / 110
Product Life Expectancy	Up to 12 years ^
Certifications	
CE	EN61000-6-3:1997. EN61000-6-1:1997
IALA	Signal colours compliant to IALA E-200-1
Quality Assurance	ISO 9001:2015
Waterproof	IP68 light-head
Intellectual Property	
Trademarks	SEALITE® is a registered trademark of Sealite Pty Ltd
Warranty *	3 years
Options Available	<ul style="list-style-type: none"> <li>• SL-155 Series Lantern</li> <li>• 200mm bolt pattern mounting plate</li> <li>• GPS Synchronisation</li> <li>• AIS Remote Monitoring</li> <li>• RS232/422/485 Port</li> <li>• General purpose inputs (1) &amp; outputs (1)</li> <li>• Lantern spacer for elevated height</li> </ul>

## Technical Illustration



Convenient battery replacement

We believe technology improves navigation™



Sealite Pty Ltd  
Australia  
☎ +61 (0)3 5977 6128

Sealite Asia Pte Ltd  
Singapore  
☎ +65 6829 2243

Sealite United Kingdom Ltd  
UK  
☎ +44 (0) 1502 588026

Sealite USA LLC  
USA  
☎ +1 (603) 737 1311

